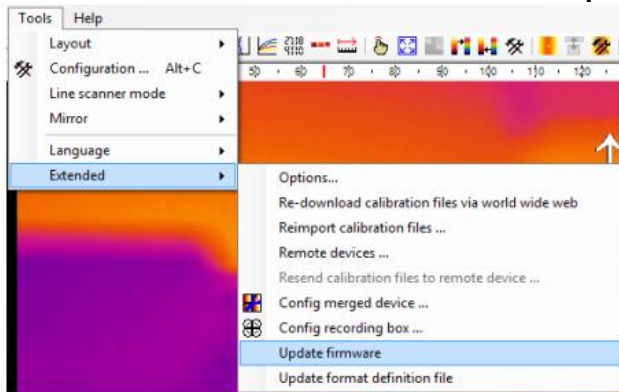


## Technical Note

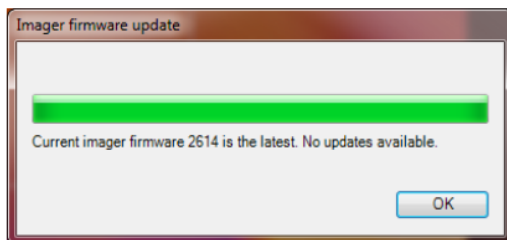
### Firmware update feature in TIMConnect

Starting from version **2.15.2219.0** the TIM Connect software has an integrated TIM firmware update feature.

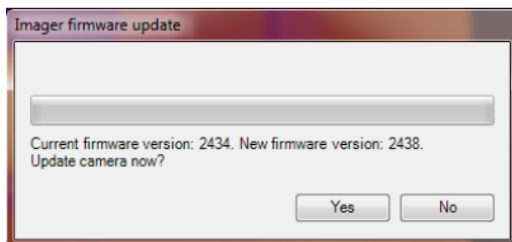
Please connect the TIM camera to your PC and start TIMConnect. The computer needs an internet connection. Go to the menu: **Tools/ Extended/ Update firmware**



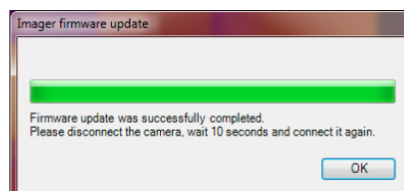
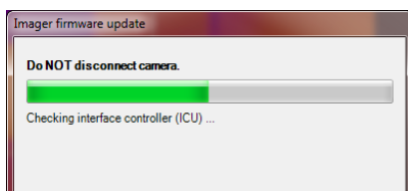
The TIMConnect is looking via the internet if for the connected TIM camera a newer firmware version is available. If your camera has the latest firmware, you will get this message (**Be aware of remark <sup>1)</sup>**)



If an update for your TIM camera is available you will get a message like this:



Press **Yes** if you want to start the update process. The following messages will appear:

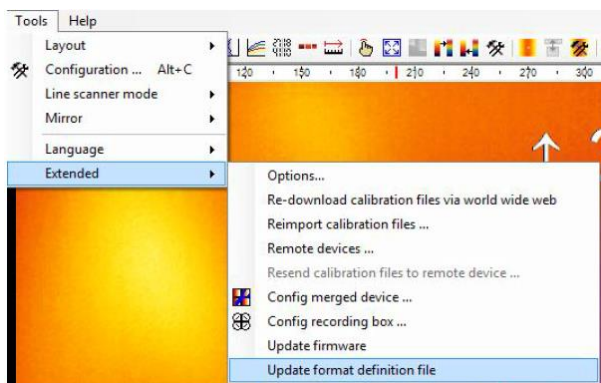


After a successful update of the firmware please **disconnect** the TIM **and reconnect** to your computer after 10 seconds.

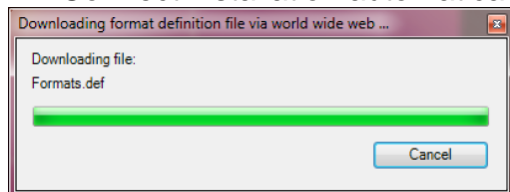
1) This message also appears if your TIM camera cannot be updated to the latest firmware because of a too old TIM hardware. If you have questions related to firmware versions and updates please contact our service department for further assistance.

Beside the firmware also the Format definition file (Formats.def) can be updated through TIMConnect now. This file contains the definition of the video formats for all TIM cameras. A new TIMConnect release always comes with the latest formats definition file, but in case a video format is added or changed it can be updated now independent of new TIMConnect releases.

Go to the menu: **Tools/ Extended/ Update format definition file**



The file Formats.def will be downloaded and updated in the program folder of your TIMConnect installation automatically now:



After firmware update and/ or update of Formats.def you can check the current versions if you open the menu: **Help/ About**

